

see the difference:

before **color camo**

starting range



light
(50% gray)



medium
(50% gray)



dark
(50% gray)

after **color camo**

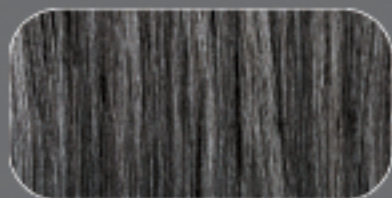
ash tone



light ash



medium ash



dark ash

natural tone



light natural



medium natural



dark natural

color camo shades are formulated with customized dyes for non-red results.
the ash shades = gray + blue/violet; and the natural shades = gray + green/gold.